

GUIDE MANUAL

midasCAD

Installation & License Activation

1 Download an installation of midasCAD

midasCAD install file can be downloaded from the web site.

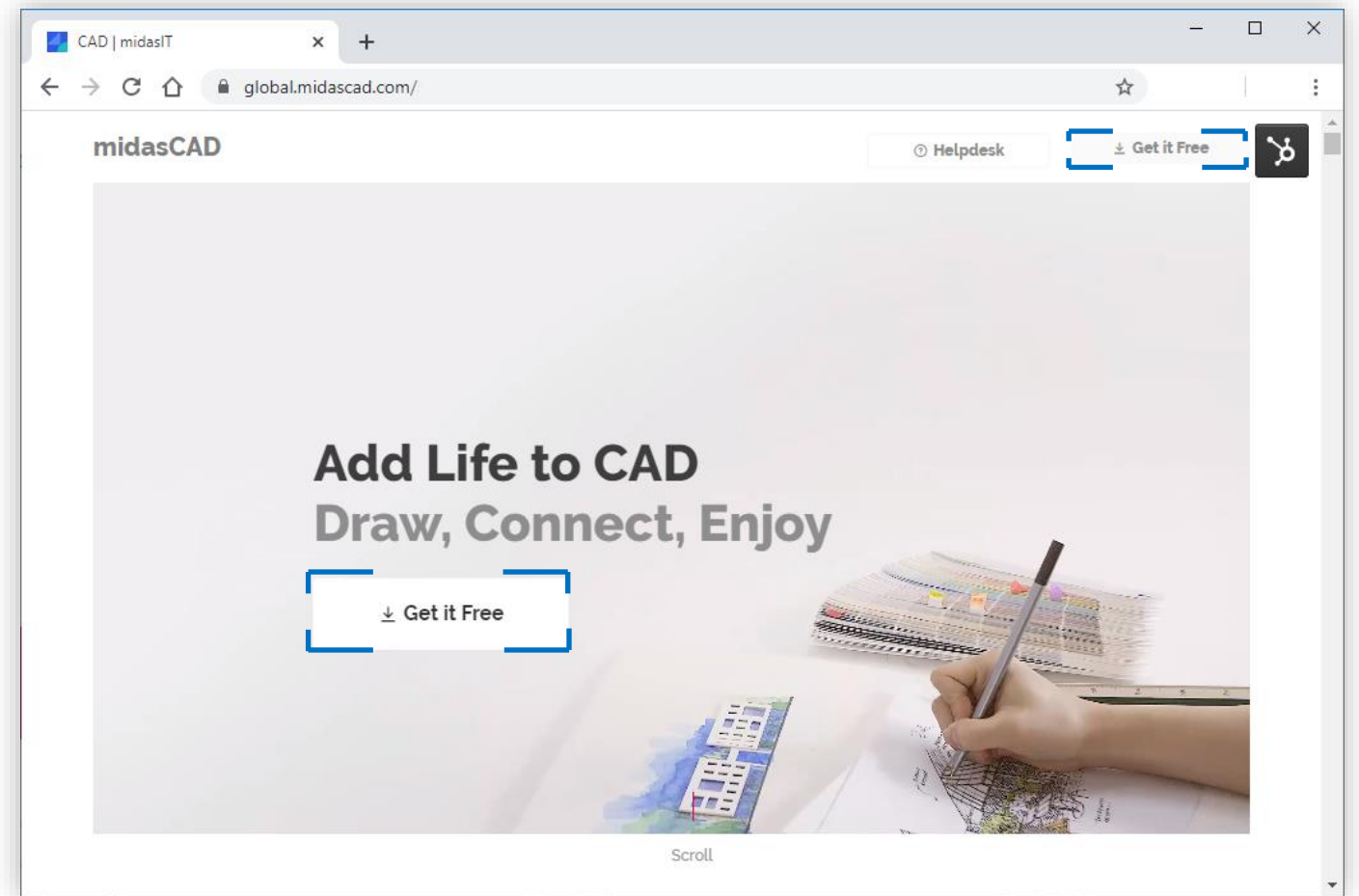
midasCAD website

<http://global.midas.com/>

Direct download link

> [midas CAD install 64 bit](#)

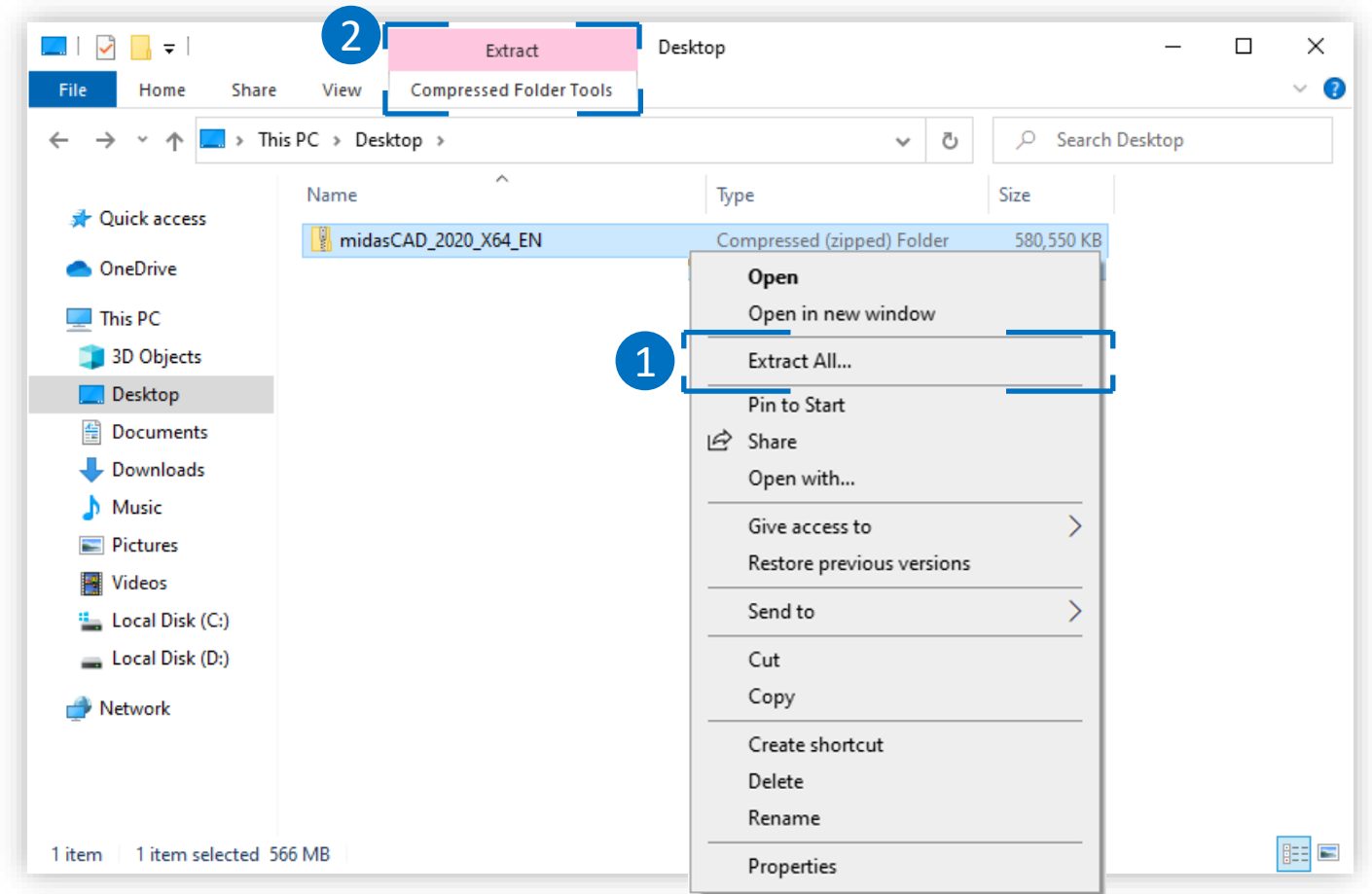
> [midas CAD install 32 bit](#)



2 Extract the downloaded install file

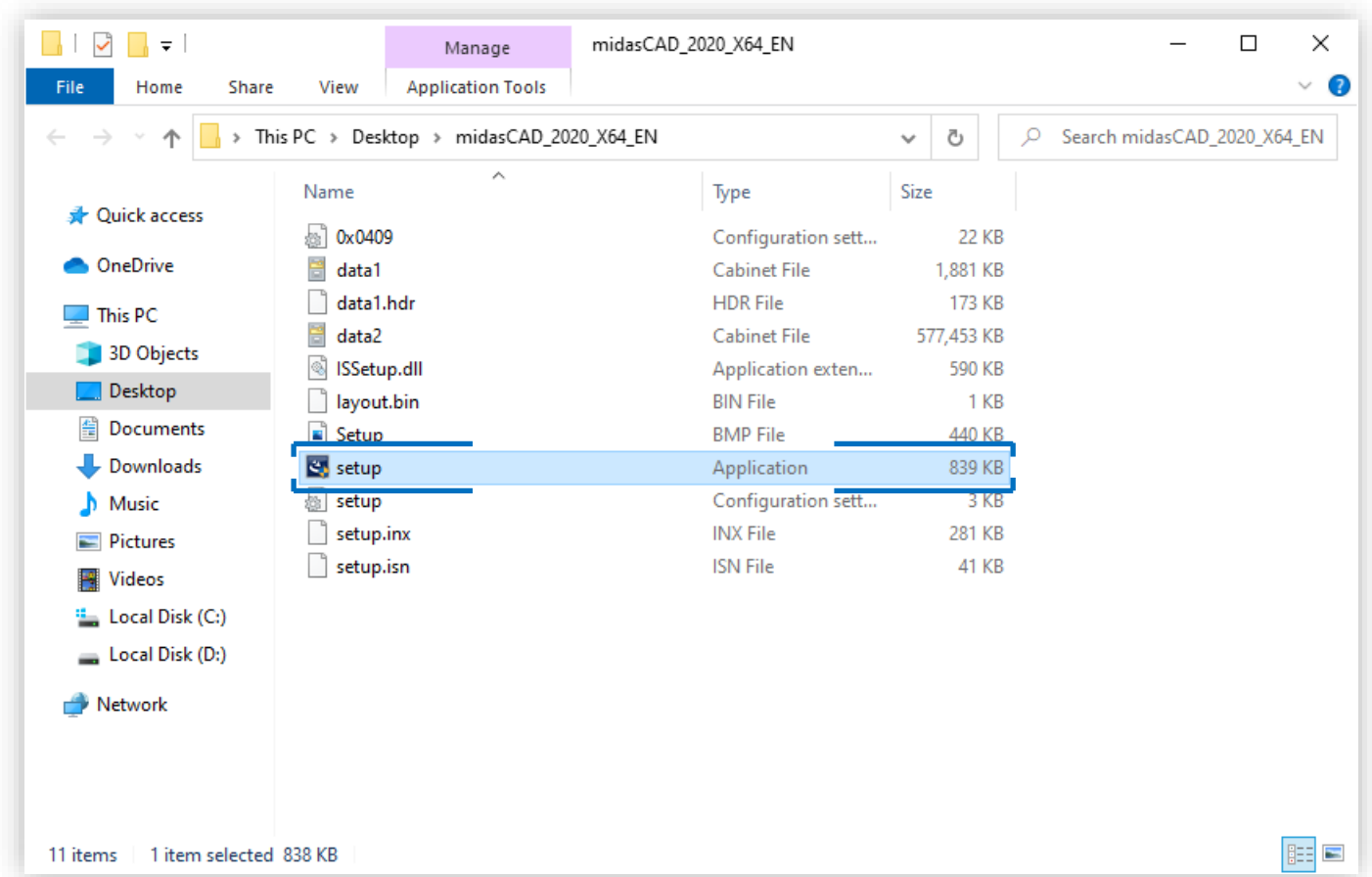
Extract (Unzip) from mouse right button click (1)

OR use the window menu toolbar (2).



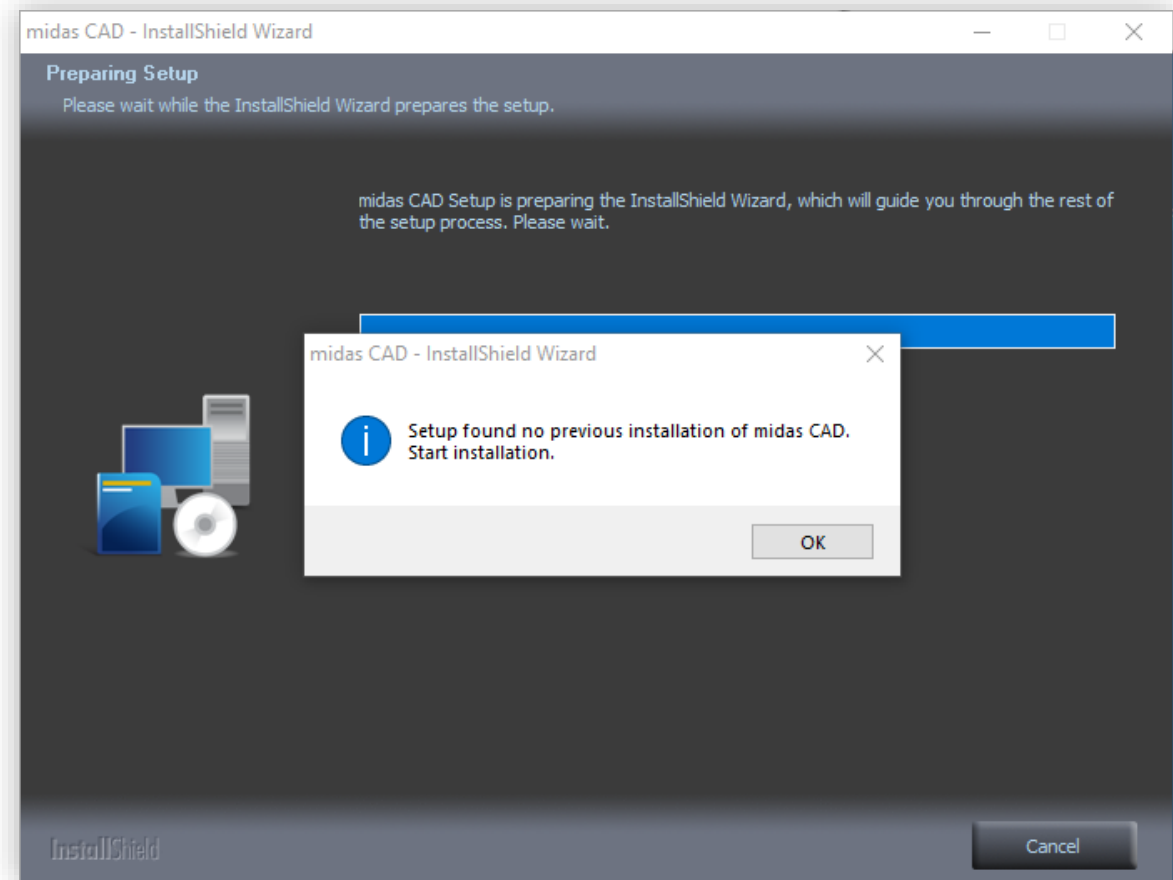
3 Run a setup application file

Open the extracted folder and run [setup.exe] application file by double clicking the mouse or enter.



4 Proceed the InstallShield Wizard

- Step 1. Preparing Setup check
- Step 2. Close activated Excel files
- Step 3. License Agreement
- Step 4. Enter User Name
- Step 5. Designate the Install Folder Location
- Step 6. Select a Program Icon Folder

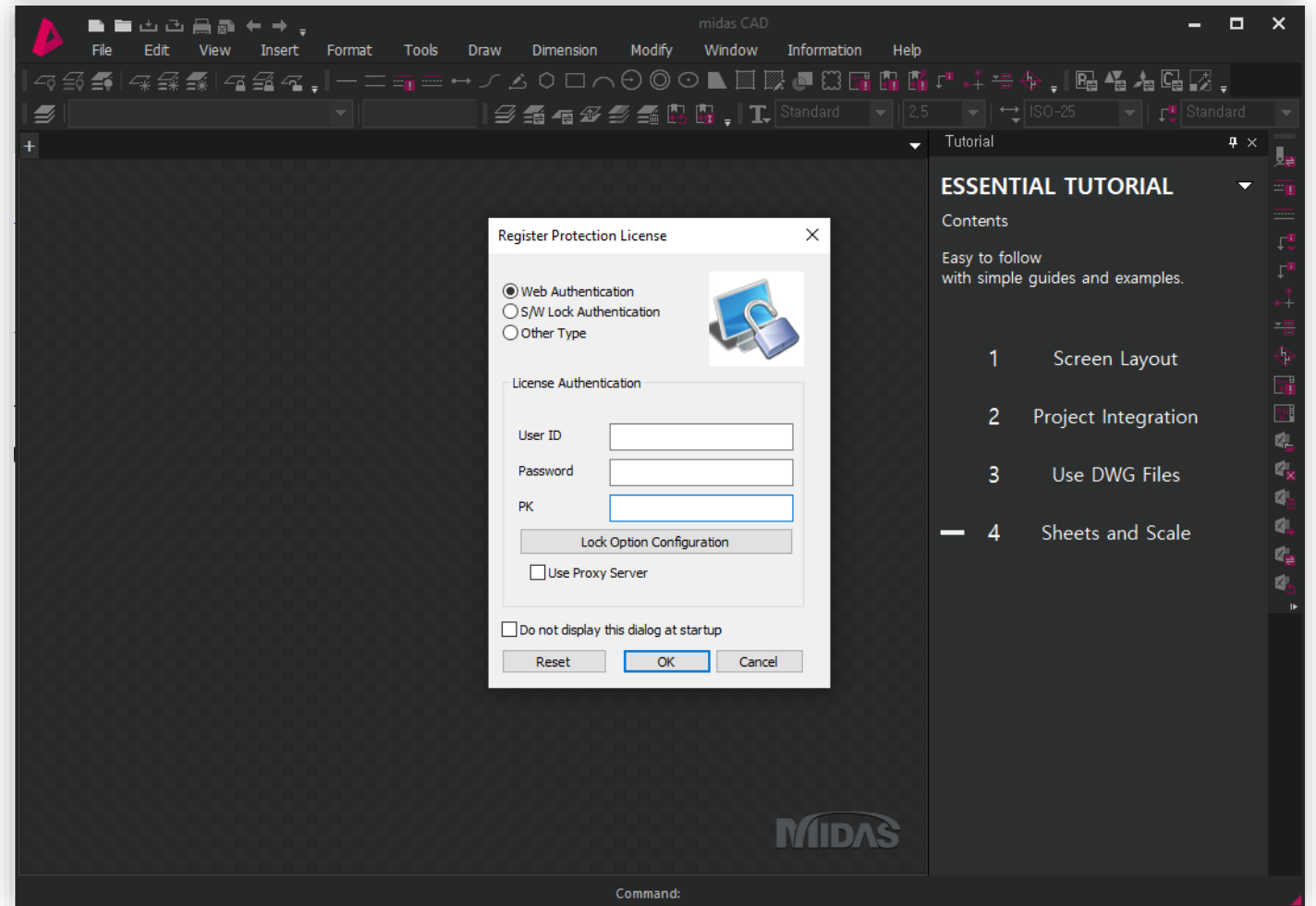


5 Run midasCAD Program & License Registration

Register Protection License dialog will show up when run the software.

Users must enter the valid License Information to use midasCAD.

If users register the license once, it will not show the registration again.

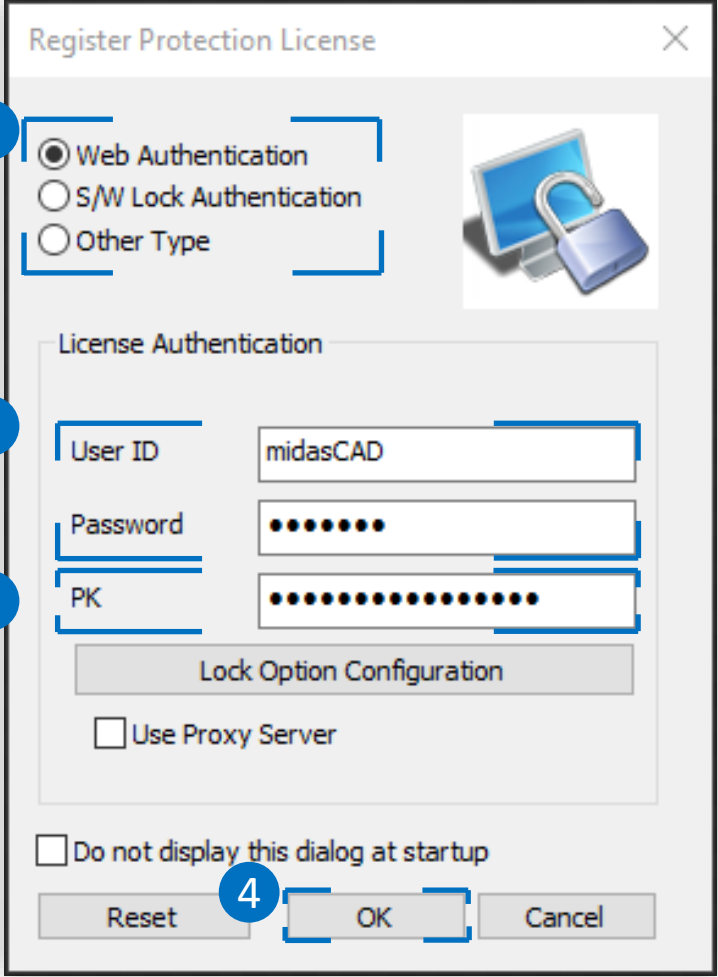


6 Enter the License Information

- 1 : Select Web Authentication
- 2 : Enter the ID and Password which you signed up from MIDAS website.
> [Go to find my ID and Password](#)
- 3 : Enter the PKID (Protection Key ID - 16 digital number) which you received to your email.
- 4 : Click [OK], and ready to use.

Have difficulties on the license registration?

> [Go to License Troubleshooting \(FAQ\)](#)



The screenshot shows the 'Register Protection License' dialog box. It features a title bar with a close button (X) and a small icon of a laptop with a padlock. The dialog is divided into several sections:

- Authentication Type:** Three radio buttons are present: 'Web Authentication' (selected), 'S/W Lock Authentication', and 'Other Type'. A blue box labeled '1' highlights this section.
- License Authentication:** Three text input fields are shown: 'User ID' (containing 'midasCAD'), 'Password' (masked with dots), and 'PK' (masked with dots). A blue box labeled '2' highlights the 'User ID' field, and a blue box labeled '3' highlights the 'PK' field.
- Lock Option Configuration:** A button labeled 'Lock Option Configuration' and a checkbox labeled 'Use Proxy Server' (unchecked).
- Startup Option:** A checkbox labeled 'Do not display this dialog at startup' (unchecked).
- Buttons:** Three buttons are at the bottom: 'Reset', 'OK', and 'Cancel'. A blue box labeled '4' highlights the 'OK' button.

7 Create a new file to start

To start a new CAD drawing file, user can open a standard template file from midasCAD.

Go to File > New... (1)

and open `mcad.mdwt` (2)

template.

